



CyberCogs CC-SGI100 Secure Gateway/Immobilizer and CC-FOB100 combination

HARDWARE SPECIFICATIONS (CC-SGI100)

- **Dimensions:** 154w x 109d x 58h (mm)
- **Power:** 6-30VDC
- **Communication Ports:**
 - 3 CAN FD bus ports
 - 2 USB3.1 port (high speed)
 - 1 OBD II port with: 1 CAN FD
- **FOB interface:**
 - programmable from 114– 138Khz Inductive comm
 - Modulation: ASK, BPSK, Manchester
 - 128 bit AES key for security
- **Input/output ports:**
 - 8 reprogrammable Analog/Discrete I/O
 - Analog inputs with 12 bit resolution
 - Mixed signal PWM input
 - Discrete inputs, programmable thresholds
 - Discrete outputs: Low Side drive
- **Processor:** Dual core ARM Cortex M7
- **Memory:**
 - 4 MBytes flash with ECC protection
 - 512 KBytes of RAM with ECC protection
 - 32 Mbytes of storage flash (up to 1Gbyte of storage)
- **Package:** ABS black plastic – UL 94 V0
- **Mounting:** Dash mount with panel
- **Temperature range:** -40 to 85 degrees C

ADDITIONAL FEATURES

- Rugged Latch/Unlatch FOB retention system
- Low power
- ISO26262 , ASIL-A compliant
- USA designed and manufactured
- Integrated HSM
- Secure boot
- Secure internal key storage for signing, verification, and encryption in secure module subcomponent

SOFTWARE FEATURES

- Adaptable Software with modular design for easy integration, performing all gateway functions
- ISS FlexHSM pre-ported through partnership with ISS
- ISS FlexUpdate pre-ported through partnership with ISS
- ISS DLM Trust for provisioning through partnership with ISS
- Secure communication available through DLM Trust (available through partnership with ISS)
- ISS DLM Update for OTA Updates of any ECU including CyberCogs SGW through partnership with ISS
- ISS AutoAuth ready for CyberCogs SGM through partnership with ISS



CyberCogs CC-SGI100 Secure Gateway/Immobilizer and CC-FOB100 combination

HARDWARE SPECIFICATIONS(CC-FOB100)

- **Dimensions:** 35w x 64d x 14h (mm)
- **Power:** CR2032 Coin battery
- **Bayonet battery door for easy battery change**
- **Battery life:** 3+ years
- **RF transmit Frequencies:**
 - 433Mhz (425Mhz to 480Mhz)
 - 315Mhz (287Mhz to 320Mhz)
- **RF transmit Modulation:** ASK, OOK, FSK
- **Data rate:** up to 200Kbps
- **Processor:** Cortex M0 running at 48Mhz
- **Memory:**
 - 12 Kbytes RAM
 - 16Kbytes of FLASH
- **IKM (Immobilizer) interface:** passive 125Khz RFID tag
- **Package:** ABS plastic UL 94V0
- **Buttons :**
 - 5 membrane buttons
 - Rated at 5 million cycles
 - 12 ounces of actuation force with tactile feedback

• Button functions:

- Lock
- Unlock
- Front Trunk
- Remote start, accessories on
- Panic

• Temperature range: -40 to 85 degrees C

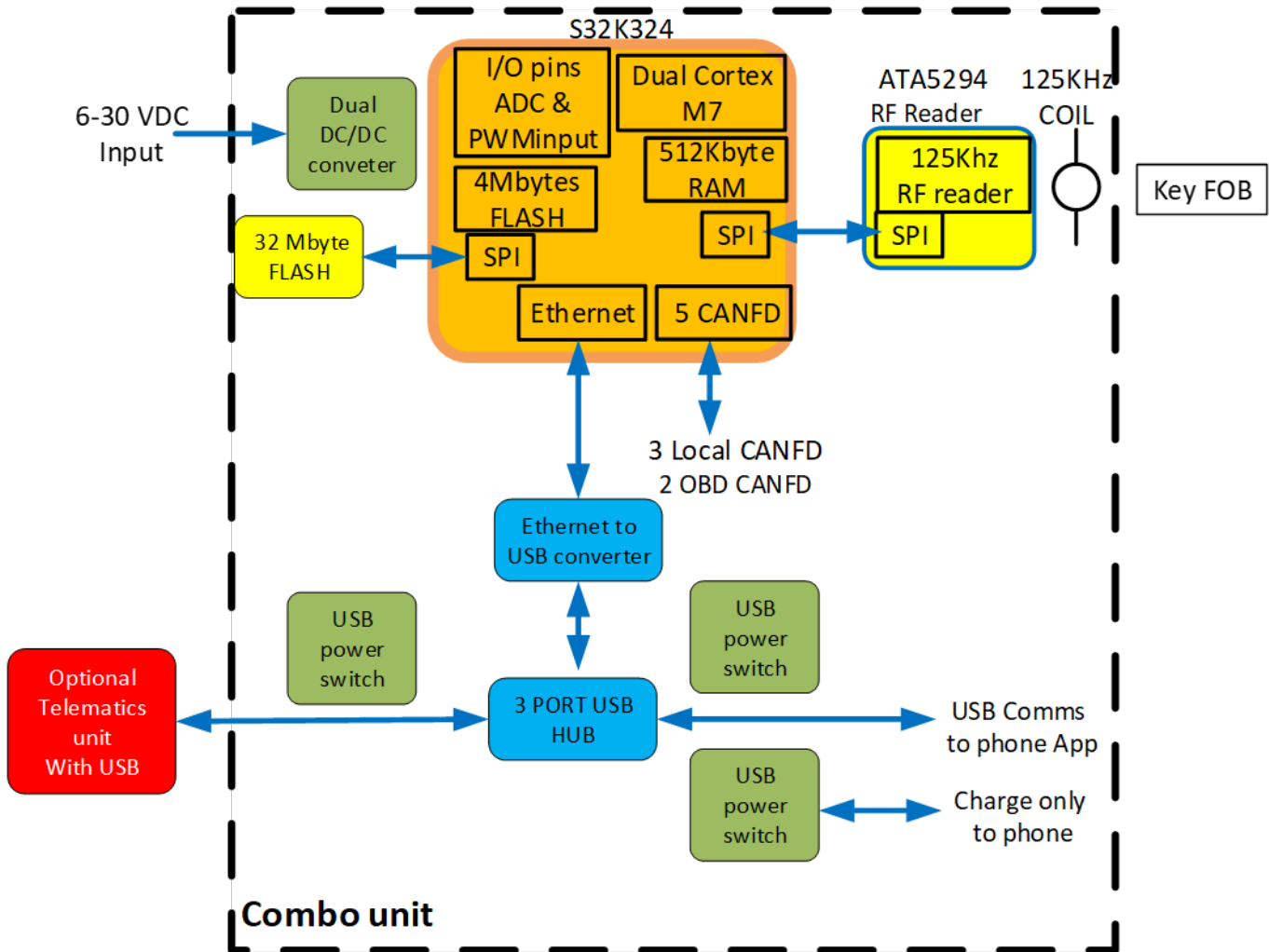
Please note CR2032 batteries operating temperature rating is between -20 to 70 degrees C

ADDITIONAL FEATURES

- USA designed and manufactured
- Integrated Security
- Secure internal key storage for signing, verification, and encryption in secure module subcomponent

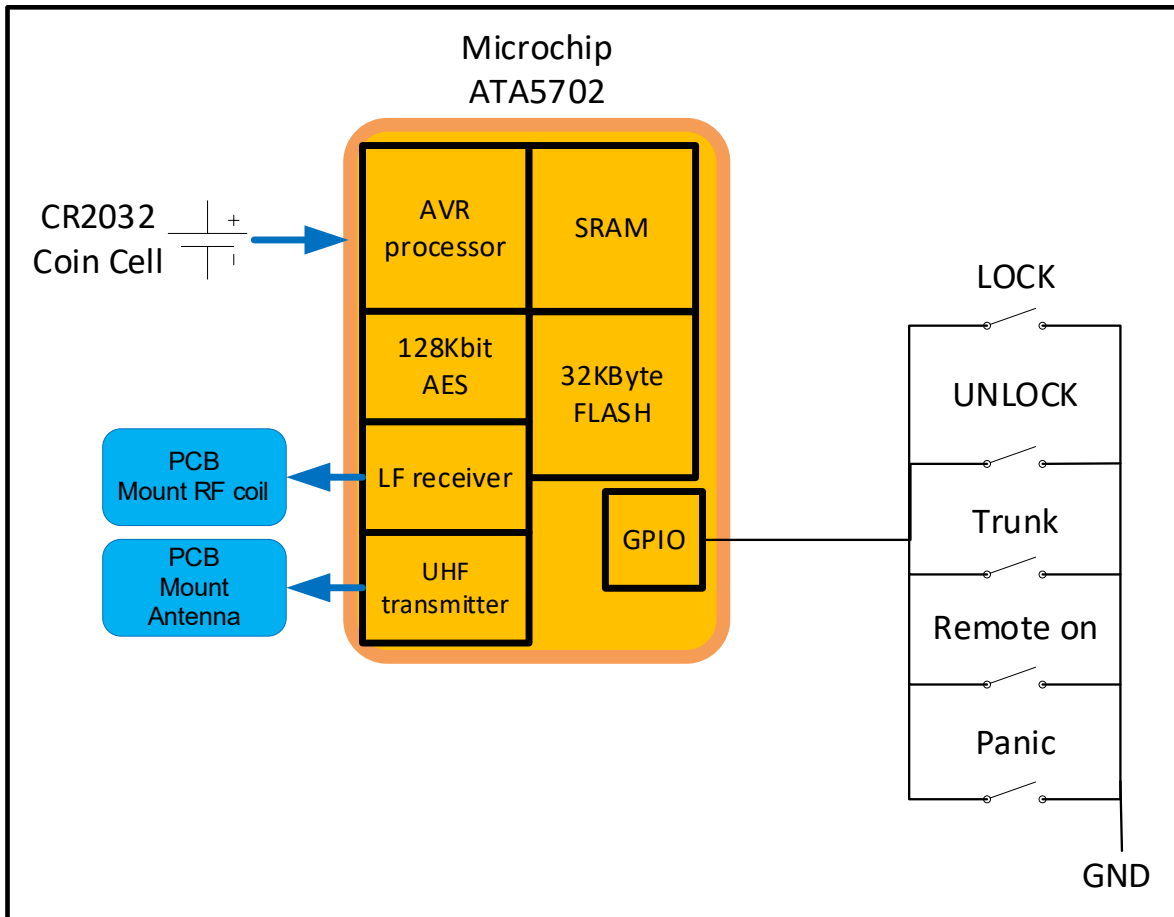


CyberCogs CC-SGI100 Secure Gateway/Immobilizer block diagram



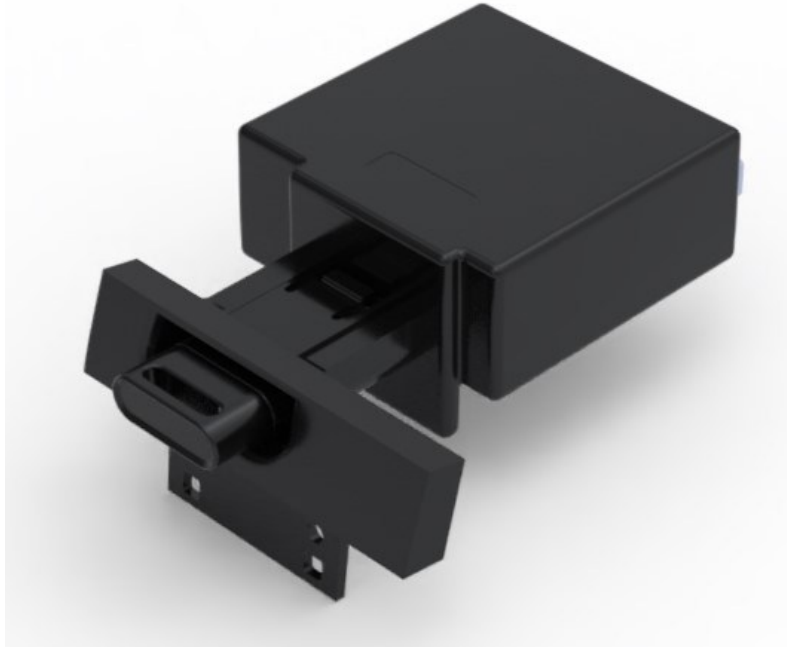


CyberCogs CC-FOB100 block diagram

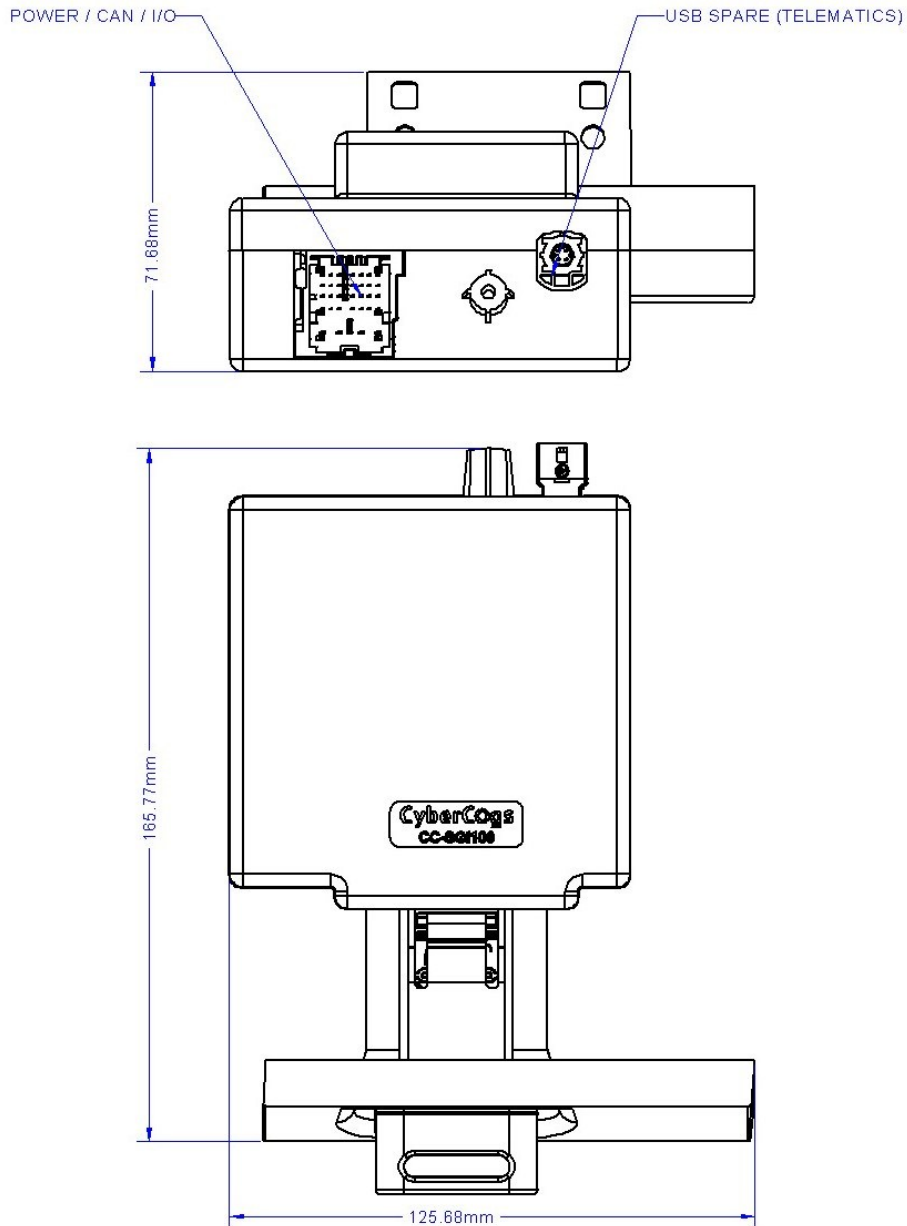




CyberCogs CC-SGI100 Secure Gateway/Immobilizer combination Depiction



CyberCogs CC-SGI100 Secure Gateway/Immobilizer and CC-FOB100 combination Dimensional drawing





CyberCogs CC-FOB100 Depiction and dimensional drawing

